

"I have several projects going with your beautiful yarn. It's such a treat to work with!"

Exclusive Luxury Superwash Blends

Whiskers ~ Indulge~lovely fingering, 80% Superwash Merino wool/10% Cashmere/10% Nylon. \$25
Baby Bunny ~ Amazing softness~fine, 60% Superwash Merino wool/20% Angora/20% Nylon. \$25
Peruvian Sock ~ Fine, super soft, 60% Superwash Merino wool/20% Silk/10% Alpaca/10% Nylon. \$25
Twinkle Toes ~ Silky, super soft, 60% Superwash Merino wool/20% Silk/20% Nylon. \$25
Can be used in place of SuperSock & Baby or Silk & Ivory. Approx 100 gm & 440 yds Hand-wash. Socks ~ 1 sk Baby Sweater: 1-2 sk Tank Top ~ 2 sk Sweater ~ 2-3 sk Needles: 1 to 5

Peruvian Dream ~ Super soft—a worsted wt smooth yarn that has a soft subtle sheen. A wonderful blend of 70% Superwash Merino wool/20% Silk/10% Alpaca. Approx 150 gm & 410 yds Sweater: 3~5 sk Needles: 6 to 8 \$35
Bella ~ Super soft—a bulky wt smooth plied yarn that has a soft subtle sheen. Instant gratification! A wonderful blend of 70% Superwash Merino wool/20% Silk/10% Alpaca. Sk are approx 150 gm 2-ply~165 yd Sweater: 3~5 Needles: 10 ~ 13 \$35

Patterns ~ available@ website. Our patterns can be shipped for \$7.50 or can be downloaded from website for \$6 each. Links are listed for other patterns used.

"Your yarn has always been the best... Looking forward to ordering via the net since I can't always go to the shows."

* FINE PRINT *

Please order sufficient amounts. Dye lots can be difficult to match. Please call for advice on amount needed if you're unsure. I have several patterns I would be happy to recommend. Custom orders/colors are fine, very welcome even, but take longer. Please be patient! Hand dyed yarns are more time consuming to produce.

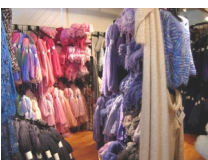
Our vibrant colors are part of what makes our yarns unique. With such rich and intense colors, there may be some color transfer. You may want to wash before using to prevent this. We don't recommend bamboo needles. I prefer washing with a mild detergent in a net bag in the washing machine. Fill with cool water, soak, spin out. Repeat. Do **NOT** agitate. Add a little fabric softener to rinse cycle. Wash colors separately. Lay flat to dry. Store yarns & garments away from direct sunlight.

You may return any unused skeins of yarn any time for credit only, with the exception of custom orders & certain sale yarns which may not be returned. This is to encourage you to buy enough yarn initially to complete your project. No refunds.

We appreciate your considering our yarns. Please let us know of any ideas that would help improve our service and/or products.

"Thank you so much for all of your products – they truly make knitting even more relaxing & fulfilling than it is with any other yarn!"

Ribbon Winding Instructions: Easy to wind if one follows directions, easy to get in trouble if one doesn't. You need a real, live person or a swift to wind ribbon; it needs to be kept under tension. **Please** don't try to use the back of a chair, etc. Before removing strings, hold 2 strings to find center then bounce around on your arms to straighten out any loose strands. Wind yarn tightly so it does not fall off ball. If yarn becomes tangled, try to tease it out gently. Place in zip-lock bag when knitting. The yarn will spiral between ball & your work, but it does not matter when knit. Use fabric glue such as Fray-chek to secure ends.



Tess' Designer Yarns

207-460-9276 (YARN)

E-mail: tess@tessyarns.com ~ www.tessdesigneryarns.com

Retail Shop ~ 1 Spring St Mail ~ 4 City Center; Portland, Maine 04101

* Fine Fibers in Exceptional Colors For Over Twenty~Five Years *

New Yarns!
Cashmere & Silk, Whiskers
Bella, Linguini & more...



Check our prices & yardage-
Artistry and Value

TESS' DESIGNER YARNS began as Pigeon Hill Farm. We had beautiful Romney sheep with long lustrous fleeces on our ocean-front farm. With the arrival of Tess in 1986, there wasn't enough time & energy for everyone so I traded my ewes for fleeces & the rams went on an extended working vacation.

This is a family business. Now Tess is taking more responsibility so I can concentrate on dyeing. She keeps me advised of current fashion & color trends & has begun to design with our silk fabrics.

We offer kits & yarns in exceptional colors at reasonable prices. After 30 years, there are now many who dye but the clarity of our colors & the lovely soft handle of our yarns continue to stand out.

We are fortunate to have top designers as well as exciting new designers sharing their creativity!

The quality of our yarns let you enjoy every aspect of creative playing - from the winding of the balls of soft luxurious yarn all the way through to the final pleasure of wearing your creations! We want you to be pleased with our yarns and will help you in any way we can to help insure your success. Enjoy!

Melinda Bickford (Tess' mom)

* COLORS *

All yarns are dyed by one person ~ each batch is unique. I like to think this is an art ~ not suitable for mass production. If you need help choosing colors, please call ~ I'd be glad to help! A few colors are below ~ there are many more. Sometimes I have an idea what color way I want to create ~ sometimes I just let the colors take me where they will. Inspiration comes from many sources ~ internal & external. I have old favorites & new colors that keep it fun & interesting. I experiment, I play & hope you are inspired to do the same!

RAINFOREST- Soft/deep purple, blues, green
VIOLET- purple, solid or with blue tinges
BLUE/VIOLET - Deep cobalt blue/purple
COBALT- Royal to deep blue, solid or / violet tinges
LIME SPLASH - Lime to soft green to cobalt to violet
MAINE WOODS & WATERS- Deep blue & evergreen
CARIBBEAN WATERS- turq. blue with violet &/or teal
FLORIDA KEYS- Purple, cobalt, turquoise
BAHAMA BAY- Soft cobalt/turquoise
MERMAID LAGOON- Teal with blue &/or violet touches
BLUE HERON- silver gray to turq to violet NEW!
DESERT JEWEL- silver gray to turq to violet
PERIWINKLE- Soft lavender / blue
FAIRY WINGS- Soft blue or pink with lav. & cream
PETAL PINK- Soft pink
DUSTY ROSE- Muted, Victorian rose, pink
ROSE BLUSH- soft medium rosy pink
ITALIAN BRICK- rust, cinnamon
PLUM DANDY- soft to deep variegated plum
POODLE SKIRT ~ pink shading into gray *NEW
PEACHY KEEN- seashell pink shading into gray
CORNFLOWER BLUE- Soft blue with violet cast
TWILIGHT- silver, violet into indigo/navy blue
NIGHT SHADES- Smoky shades of violet to indigo/navy
SILVER- Pale silver to light gray
BLUE STEEL - Deep bluish gray
BLACK- Soft charcoal to deep black
ENGLISH SHEEPDOG - black to gray to white

FROG KISSES- Yellow green with blue green "kisses"
HIBISCUS- soft -med warm rosy/pink, melon
SPRING GARDEN-Soft.pink,lav.blue.green,yellow.peach
CONFETTI-brights.fuchsia.purple.blue.green,yellow.orange
PAPAYA- Warm, buttery rosy peach
PEACH MELBA- Peach/ fuchsia/raspberry /violet
LEMON or LIME SOUFFLE- pale yellow or lime green
RED- Warm, earthy or cool, bright
OCEAN STORM- Deep, dark eucalyptus green
MIDNIGHT BLUE- Deep indigo, navy
EGGPLANT- Deep, dark purple
EUCALYPTUS- Pale, cool, light sage green
SEA BREEZE- Soft silvery green /soft silvery blue
LILAC- Soft lavender, violet
SEASHELL PINK- Soft peach, coral
MUSHROOM SOUFFLE- Soft hues—gray, taupe
COCOA BROWN - Soft to med cool brown
COFFEE BEAN - Rich, deep warm multi-hued brown
COPPER KETTLE-copper with dk brown touches
ZINFANDEL-Rich deep brownish red
REDWOOD- Rich, reddish brown
BIRCH BARK - Soft grays & browns & cream
BUTTER PECAN - Oatmeal/warm amber tone
TAUPE- Soft beige, champagne

Limited Edition Colors...Chocolate Series, Metro, Ocean Blues, Slate Forest, Mendocino Vineyard, Mango/Raspberry Sherbet, Enchanted Forest, Not in Kansas Any-more, Lemongrass, Orange Sunshine, Caribbean Treasure, Mahi~Mahi, Cobblestone and more!



* Fine Hand Dyed Yarns *

Super Socks & Baby Yarn

Fine machine wash & dry yarn- great for socks, shawls & baby! This yarn is 80% Merino wool & 20% Nylon. It combines the softness & elasticity of Merino wool with the durability of nylon for socks made to be worn often! Approx 100 gm & 450 yd Socks/shawl/baby sweater: 1 sk Needles: 1-3 \$20

Superwash Merino Lace

Very fine & super soft—can be used in multiples or in combination with other yarns for fun with color. Mach Wash & Dry! 100% Merino wool Approx 50 gm & 500 yds \$10

Superwash Merino Petite

Fine super soft—can be used in place of Silk & Ivory. Machine Wash & Dry! 3-ply—100% Merino wool Appx 150 gm & 665 yds Sweater: 2-3 sk Needles: 3 to 5 \$30

Superwash Merino New ~ 4 oz sk ~ \$18 ~ limited colors

This worsted wt. yarn feels *so* good, you know it's Merino. The surprise is that it's also machine wash & dry! In a review in *Knitters'* magazine, the writer picked this yarn as her favorite among more than a dozen Superwash yarns. Approx. 285 yd & 4 oz / 8 oz, 560 yd skeins. Sweater: 5-6/2-3 sk Needles: 7 to 9 \$18/\$35

Superwash Merino Bulky

Super soft bulky—4 ply. Mach Wash & Dry! 100% wool Approx 8 oz & 210 yds \$35

Mohair & Merino

A very versatile yarn! Although it is a worsted weight, I have seen it knit from 4 to 6 stitches per inch. Mohair gives this yarn a nice luster and helps it to wear well with great stitch definition. A smooth yarn, it is a blend of 55% Mohair & 45% Merino wool. Skein approx. 8 oz & 490 yd Sweater: 2-3 sk Needles: 5 to 9 \$35

Petit Manan

1 ply Mohair & Merino~55% Mohair & 45% Merino wool. Skein approx. 4 oz & 490 yd Sweater: 4~5 sk Needles: 6 to 8 \$20

Grand Manan

Bulky version of Mohair & Merino~55% Mohair & 45% Merino wool. Skein approx. 8 oz & 325 yd Sweater: 4~5 sk Needles: 8 to 11 \$35

Angel Hair

A soft, finer brushed mohair. Skeins are approx. 9 oz and 787 yds. 78% Mohair, 13% Wool, 9% Nylon Sweater: 2 sk Needles: 7 - 10 \$50

Kid Mohair

An especially soft, fine mohair- nice alone or in combination with other yarns. knits quickly on big needles! Approx. 3.5 oz/ 450 yds (8 oz/ 1000 yards) 78% Mohair, 13% Wool, 9% Nylon Sweater:1-2(2-3)sk Needles: 5 to \$30/\$50

Microfiber Ribbon

The yarn has the look & feel of silk with the elasticity & machine washability of 100% nylon and a very flexible gauge - a great combination! Lots of yardage—skeins are approx. 150 gm & 333 yd. Sweater: 3 - 5 sk Needles: 4 - 9 \$25

Peruvian Dream ~ Super soft—a worsted wt smooth yarn that has a soft subtle sheen.

A wonderful blend of 70% Superwash Merino wool/20% Silk/10% Alpaca. Approx 150 gm & 410 yds Sweater: 3~5 sk Needles: 6 to 8 \$35

Prime Alpaca

This is a smooth yarn made from 100% prime alpaca. This very soft sport wt yarn feels like a cashmere cousin. Skeins are approx. 8 oz and 665 yards.

Sweater: 2 sk Needles: 4 - 6 Natural Shades \$30 Dyed \$35

Alpaca Lace New!

Fine, soft in lovely muted shades -100% Alpaca lace wt Approx. 550 yd / 50 gm \$15

Baby Alpaca & Silk NEW!

Very soft baby alpaca & silk~ so soft! A light wrst wt yarn - 70% Alpaca,30% Silk Approx 150 gm & 410 yards. Sweater: 3~4 sk Needles: 5 to 8 ~ \$35

Oruga

A textured yarn that looks like Welsh Wool but so soft because it's mostly alpaca. A bulky wt yarn - a blend of 62% Alpaca, 12% Wool, 3% Nylon! Skeins are approx 8 oz & 140 yards. Sweater: 4 - 5 sk Needles: 9 to 11 \$40

Petite Silk

Premium silk in a lace wt—very fine & super soft. Can be used singly or plied with other yarns. Approx 450 yd & 40 gm \$20

Silky Locks New ~ 4 oz sk ~ \$25 ~ limited colors

A soft, silky boucle yarn -great by itself or mixed for texture & glow with other yarns. Light bulky wt yarn -42% Mohair, 25% Silk, 25% Wool, 8% Nylon! Approx 8 oz & 400 yard skein. Sweater: 2-3 sk Needles: 9 - 11 \$50

Cascade Silk

Premium silk in sport wt & worsted wt plied yarns offer you a choice. Available in brilliant colors with incredible luster and softness. Approx. 150 grams 100% Silk Fine (Wrst) ~ 666 (333)yd Sweater: 2(4) Needles: 4 to 6 (7 to 9) \$60

Silk & Ivory

A light lovely yarn- 50% silk and 50% wool -it offers the light, silky softness of pure silk with the loft & elasticity of wool. A sport wt yarn suitable for all climates. Approx. 150 gm & 665 yd Sweater: 2 sk Needles: 3 - 6 \$55

Silk & Merino

One of our nicest yarns. A worsted wt blend of 50% Silk and 50% Merino wool. The soft twist ply improves wear while still feeling soft. Approx. 100 gm & 250 yd Sweater: 5-6 sk Needles: 7 to 9 \$35

Cultivated Silk & Wool

Though this yarn looks like pure silk (it glows!), it's a 50/50 blend of silk & merino - a lustrous soft, silky single ply wstd wt. A good choice to make something special! Approx. 100 gm & 200 yds Sweater: 5-7 sk Needles: 7 to 9 \$35

Silk Boucle

Premium silk boucle, available in brilliant colors with incredible luster and softness. Sk approx. 100 gm & 200 yards. 100% Silk Scarf: 1 skein Needles: 5 to 9 Retail: \$40

Silk Chenille

A chenille so soft & sensual that it should carry a warning label - wear with care! It feels so good on your skin that you may want to sleep with it! A joy to knit! 100% silk. Skeins 100 gm & 333 yd. Sweater: 4-5 sk Needles: 4 - 5 \$50

Linguini New!

Luxuriously soft, smooth 100% silk ribbon Sk approx. 50 gm & 150 yards. 100% Tus-sah Silk Sweater: 5-8 skein Scarf: 1 skein Needles: 6 to 8 Retail: \$20

Raw Silk

Raw silk looks & feels a lot like cotton. A sport wt yarn - warm in the winter & cool in the summer. Sk approx. 7-8 oz /800-900 yards Sweater: 2 sk Needles: 3 to 5 \$35

Angora & Merino

Less fluff, still soft. Not just for those who love the softness of angora but don't want all the fluff - I think this will be very popular with everyone. Approx 50 gm & 185 yards. 50% angora/50% wool Sweater: 5-6 Needles: 5 - 8 \$35

Fine Cashmere

Incredibly soft for the ultimate knitting experience! Skeins are approx. 50 gm and 245 yards. 100% cashmere. Sweater: 4-6 skeins Scarf: 1 skein Needles: 4 - 6 Retail: \$50

Prices subject to change without notice